

AZEK[®]
EXTERIORS

TIMBERTECH[®] CLADDING



TimberTech[®]
BY **AZEK**[®]

THE MOST AUTHENTIC
LOOKING HARDWOOD
ALTERNATIVE



For exterior materials on high-end, luxury buildings, there are two non-negotiables: beauty and functionality. TimberTech Advanced PVC Cladding delivers on both, capitalizing on the strength of both the AZEK Exteriors and TimberTech brands.

THE BEAUTY OF WOOD

TimberTech has unmatched technology and methods to create the most realistic, authentic hardwood appearance. Best known for high-end decking, TimberTech boards deliver the beauty, textures, and colors of real wood within a sustainable composite or Advanced PVC material. Unlike wood, however, our proprietary materials are essentially maintenance-free, incredibly durable, and performance warranted for decades.

BUILDING EXTERIORS EXPERTISE

AZEK Exteriors brings decades of experience with functional and decorative components of a building exterior including premium siding and trim, detailed mouldings, and innovative engineered casings and water management solutions. TimberTech Cladding offers many choices in colors, widths, and installation profiles to fulfill most any design requirements.

You can be confident specifying TimberTech Cladding in your designs. And your clients will appreciate the ingenuity of an exterior solution built to endure beautifully.



SHOWN: ENGLISH WALNUT 5.5"
SQUARE SHOULDER BOARD

Home designed by Carbon 6, built by Swanson Homes,
photographed by Spacecrafting Photography.



RESIDENTIAL WARRANTIES

TimberTech Advanced PVC Cladding is backed by an industry leading lifetime product warranty and 50 -year fade & stain warranty.



COMMERCIAL WARRANTIES

Bring the enduring beauty of TimberTech Advanced PVC Cladding to your commercial builds with the confidence guaranteed from durable materials.



CLASS A RATED FLAME SPREAD INDEX

The TimberTech Vintage Collection® is ranked Class A (the highest ranking), which means the most likely to minimize the spread of an active flame. This an important consideration in areas prone to wildfire and reassuring to clients anywhere.



AUTHENTIC WOOD LOOKS WITHOUT THE MAINTENANCE

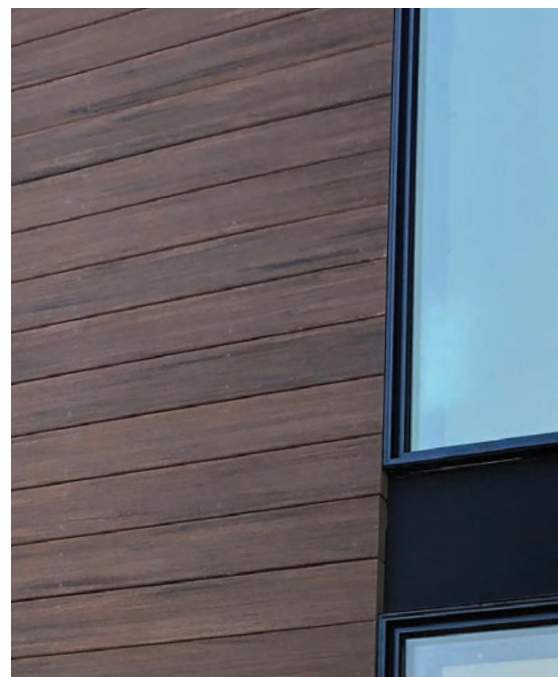
TimberTech Cladding from AZEK Exteriors portfolio delivers the full visual experience of wood without the laborious, costly, and constant upkeep required with traditional lumber. TimberTech technology gives our Advanced PVC boards unrivaled aesthetics for a realistic wood look that lasts. Then we back them with industry-leading warranties for both commercial and residential buildings. Our curated collection empowers design flexibility with a variety of color choices, different board profiles, and board widths.



SHOWN: COASTLINE®
5.5" SQUARE SHOULDER BOARD

BOLD. ELEGANT. TIMELESS.

TimberTech's one-of-a-kind Advanced PVC material was designed to deliver the most realistic wood look available, without additional staining or painting. Unlike traditional wood, TimberTech withstands the elements without compromising on its color, texture, or structural integrity. That translates to a beautiful exterior finish without frequent upkeep or maintenance.



TIMBERTECH CLADDING

Made completely of new and recycled polymer, TimberTech Advanced PVC boards stay impervious to moisture, mold, and mildew while also combating the fading effects of UV rays. Backed by industry-leading warranties, TimberTech Cladding delivers unrivaled design potential and integrity.



STAINED WOOD EXPOSED FOR SEVEN YEARS

Exposure to the elements takes a toll on traditional wood cladding—even premium hardwoods like Ipe will fade to a worn gray without regular and costly maintenance. Traditional woods can be treated with stains and coatings for protection, but will still experience splintering, fading, and dimensional changes.



READ OUR
CLADDING
CASE STUDIES

SHOWN: DARK HICKORY
5.5" SQUARE SHOULDER BOARD

SHOWN: COASTLINE®
5.5" SQUARE
SHOULDER BOARD



SHOWN: ENGLISH WALNUT
5.5" SQUARE SHOULDER BOARD



TimberTech®

ADVANCED PVC

BY AZEK®

VINTAGE COLLECTION

The Vintage® Collection offers the widest range of sophisticated color palettes and unique board widths in the industry, offering maximum design flexibility with options to fit any home's style. Defined by natural-looking colors that mimic the look of lpe, teak, and other hardwoods and a subtle wire-brushed, low-gloss finish, this elegant collection ensures a truly authentic wood look.



COASTLINE®



WEATHERED TEAK®



MAHOGANY



ENGLISH WALNUT®



DARK HICKORY



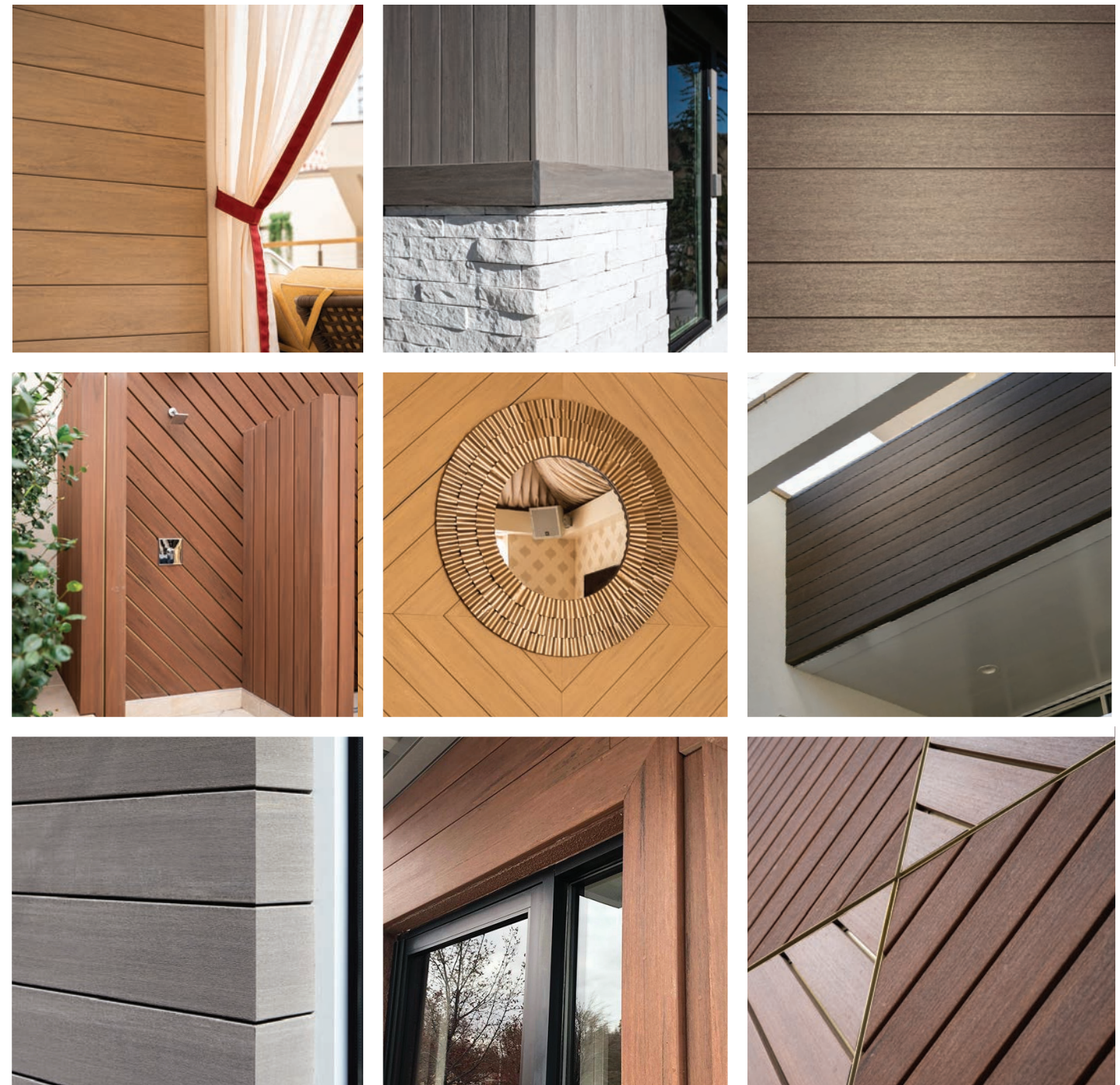
CYPRESS®

DESIGN'S THE LIMIT

With an unmatched portfolio of diverse colors, woodgrain patterns, and board widths, the design potential with TimberTech Cladding is nearly limitless. With moisture- and fade-resistant Advanced PVC technology, TimberTech Cladding boards protect the integrity of your exterior design vision for years to come. Build on the rich hues and textures of TimberTech Cladding to highlight an entryway, add design detail to a porch ceiling, or as one element among mixed building materials for a clean, dimensional finish.



SHOWN: ENGLISH WALNUT 5.5"
SQUARE SHOULDER BOARD





TONGUE-AND-GROOVE

SQUARE-SHOULDER

CORTEX HIDDEN FASTENERS

The Cortex® hidden fastening system keeps the focus on the warm, authentic wood aesthetics that complement the entirety of the exterior design and not on the installation method.

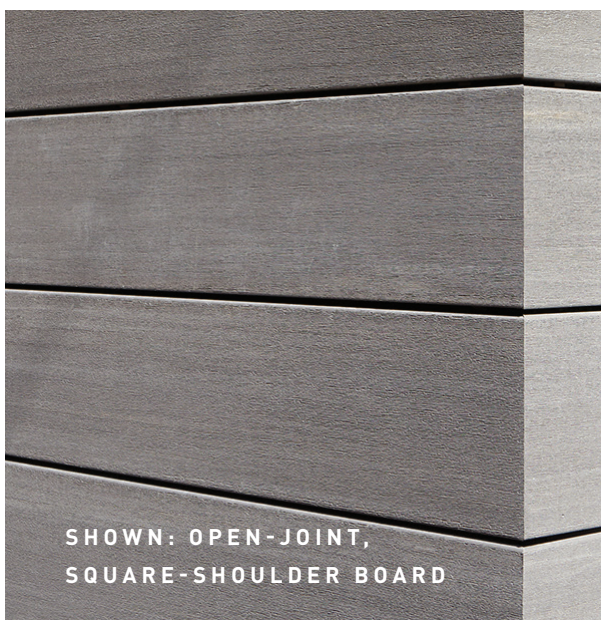


SHOWN: CLOSED-JOINT, TONGUE-AND-GROOVE BOARD

CLOSED-JOINT CLADDING

Sometimes referred to as "closed-joint," tongue-and-groove boards interlock together with ease, creating a solid barrier with a neat, smoothly finished look without gaps.

Tongue-and-groove board sizes:



SHOWN: OPEN-JOINT, SQUARE-SHOULDER BOARD

OPEN-JOINT CLADDING

The open joints between the cladding elements create a strong, linear design pattern while also functionally providing ventilation for proper air circulation.

Square-shoulder board sizes:



CLOSED-JOINT TONGUE-AND-GROOVE	WIDE WIDTH 5 1/2"		STANDARD WIDTH 3 1/8"		
	12'	16'	10'	12'	16'
Standard Thickness 1"					
COASTLINE®	•	•		•	•
WEATHERED TEAK®	•	•		•	•
MAHOGANY	•	•		•	•
DARK HICKORY	•	•		•	•

OPEN-JOINT SQUARE-SHOULDER	SQUARE SHOULDERED LENGTHS		
	12'	16'	20'
VINTAGE COLLECTION®			
Standard Thickness 1" Standard Width 5 1/2"		•	•
Standard Thickness 1" Narrow Width 3 1/2"		•	•
Standard Thickness 1" Wide Width 7 1/4"		•	•



SEE FOR YOURSELF AND ORDER A FREE SAMPLE TODAY



MADE IN THE USA

The cladding applications depicted in this brochure are for display purposes only and not for the purpose of validating the suitability, warrantability, or safety of any particular installation or application of the product. Always consult AZEK's Installation Instructions as well as local building codes to ensure proper installation.

Depending on environmental conditions, TimberTech cladding colors may appear to change over time as part of the natural weathering process and consistent with applicable Fade & Stain Warranties.

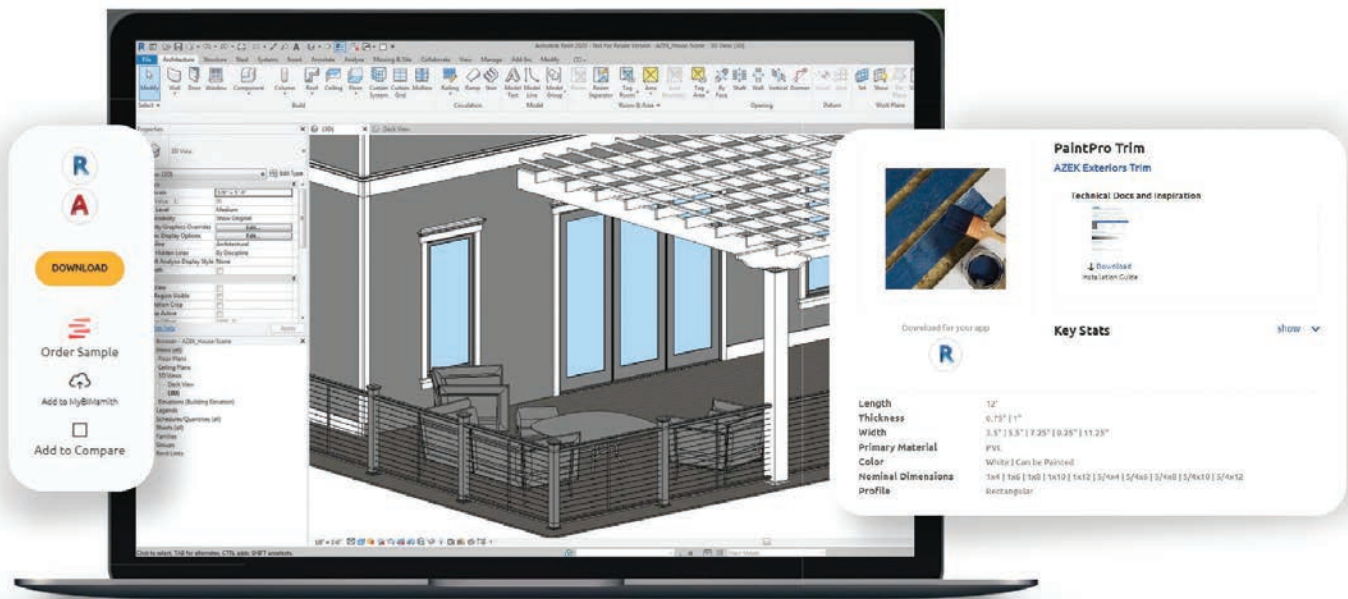


BUILDING A SUSTAINABLE FUTURE

The family of brands under the AZEK Company, including TimberTech and AZEK Exteriors, are trailblazers in recycling and using hard-to-recycle materials in our products. We divert 500 million pounds of waste and scrap materials from landfills and oceans annually, a number we expect to grow to 1 billion pounds by 2026. As of 2022, we are the largest vertically integrated PVC recycler in the USA.

TimberTech Advanced PVC Cladding boards are made from up of approximately 50% recycled materials and contain no organic wood—meaning no deforestation anywhere. We’re not stopping there though. We’re furthering our recycling capabilities every day, ensuring that TimberTech Cladding continues to deliver beauty, a long, low-maintenance lifespan, and environmentally conscious leadership.

GET TIMBERTECH AND AZEK EXTERIORS REVIT® FILES



AZEK Exteriors and TimberTech are pleased to provide Revit® content for our premium exterior building products. Get started with AZEK BIM projects today: market.bimsmith.com/AZEK.

- Installation Guides
- Architectural Specification
- Order FREE Samples
- CAD Drawings
- Care and Maintenance
- BIMsmith Content

EARN AIA OR AAA CONTINUING EDUCATION CREDITS



To help architects meet continuing education requirements, AZEK sponsors a series of approved courses, which are available for free through online courses, in-person presentations, and as webinars.

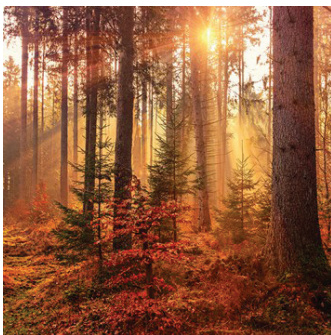


LEARN ABOUT OUR SUSTAINABILITY EFFORTS AND PROGRAM

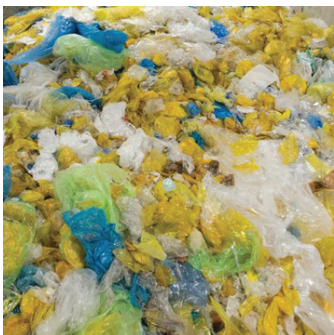


TAKE ONLINE COURSES AND EARN AIA CREDITS

SUSTAINABLE CLADDING MATERIALS BY THE NUMBERS



1 M TREES SAVED
Choosing TimberTech Cladding and TimberTech decking over wood have helped save more than 1 million trees since 2015.



500 M LBS DIVERTED
Across the company, we diverted roughly 500 million pounds of waste in 2021. We also reuse 98% of internal scrap and are 97% landfill-free.



96% WATER RECYCLED
Thanks to our closed-loop water filtration system, we recycle up to 96% of the water that our company uses each year.



“Heck yeah!”

Asked if he would recommend TimberTech Cladding to other builders, designers and architects, Michael had this to say:

Michael Ansel
OA Design+Build+Architecture

AZEK™
EXTERIORS

TimberTech
BY AZEK